

Fatal Light Awareness Program



FLAP

Preserving the Lives of Migratory Birds in Urban Areas
Michael Mesure – March 11, 2005

Case Study



Toronto Financial District
Over 27,000 Birds from 158 Species



Case Study



Tower walls create a maze of glass and steel.



Case Study



Neighboring light reflects on dark windows.



Case Study



If birds survive impact they then must contend with lobby lights.



Case Study



Glassed alley & link ways create *Dead Ends* for fallen migrants.



Case Study

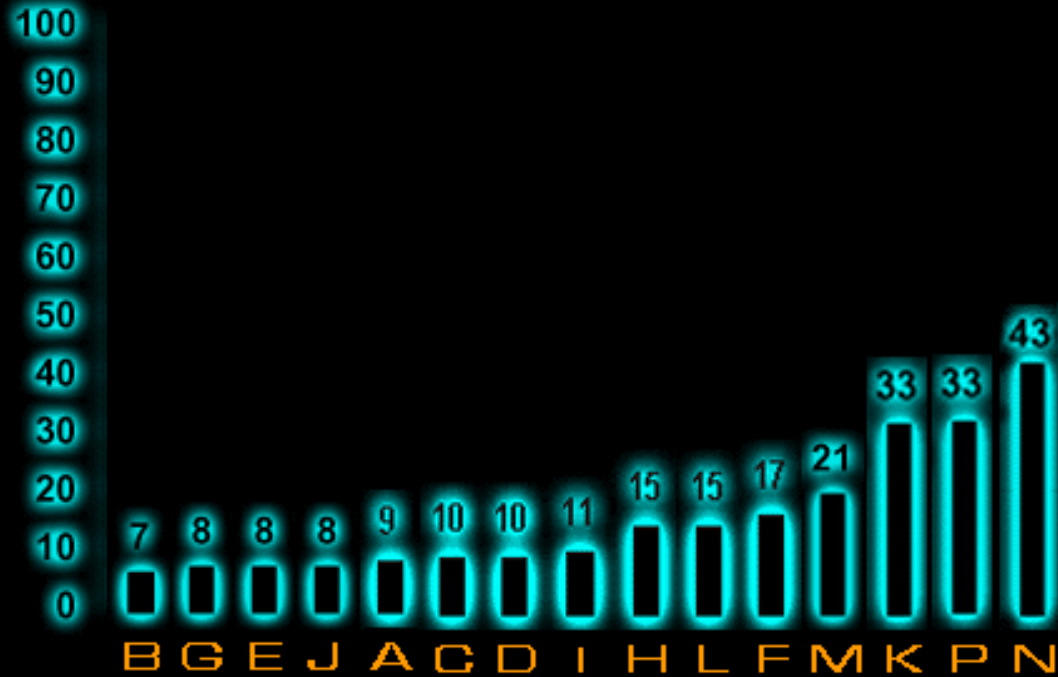


Plants inside lobbies act as traps for fallen migrants.



Bird-Friendly Building Program (BFB)

Fall of 2008



15.5% Average

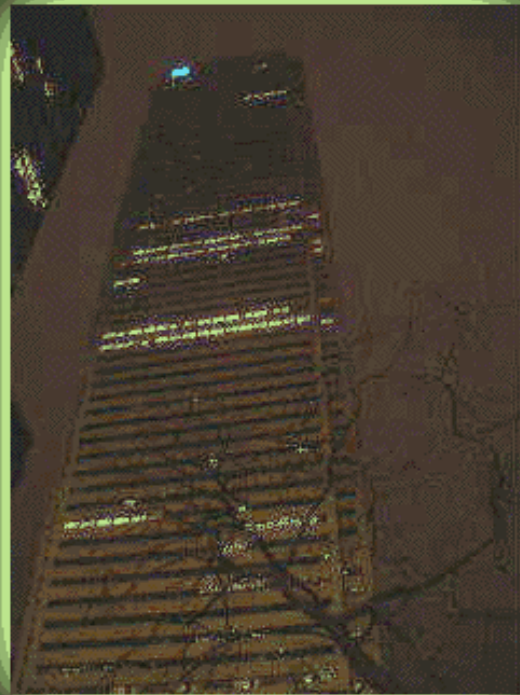


Selected Group of BFB Towers

1 FIRST CANADIAN PLACE



FALL 1997
48%



SPRING 2001
8%



Lighting Control Strategies

- Install motion-sensitive lighting.
- Return to individual metering.
- Do away entirely with exterior vanity lighting. Substitute with strobe lighting.



Lighting Control Strategies



Spot lights and flood-lit surfaces can prove to be the most lethal form of light.



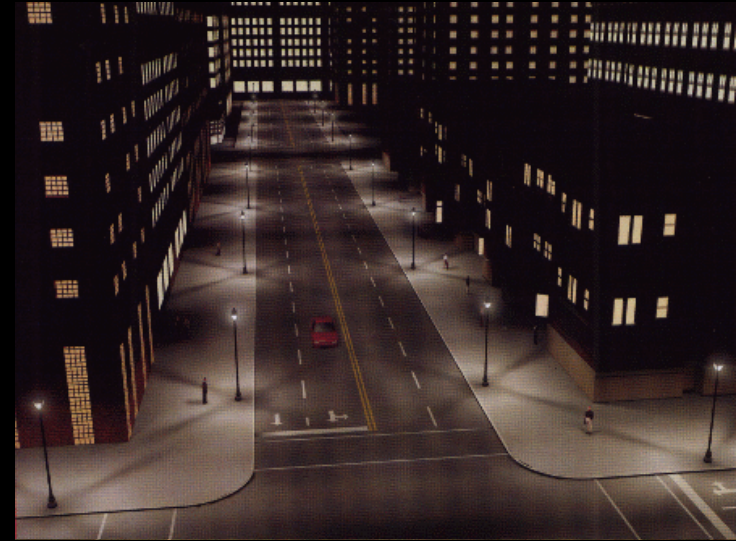
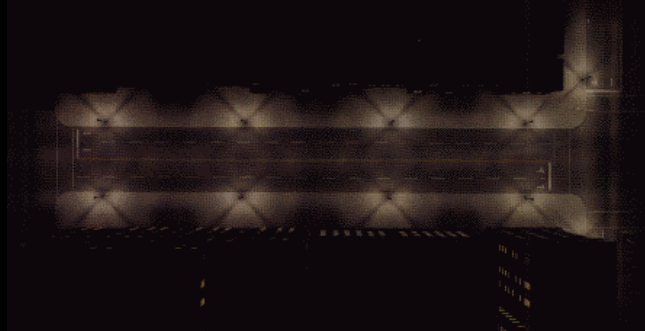
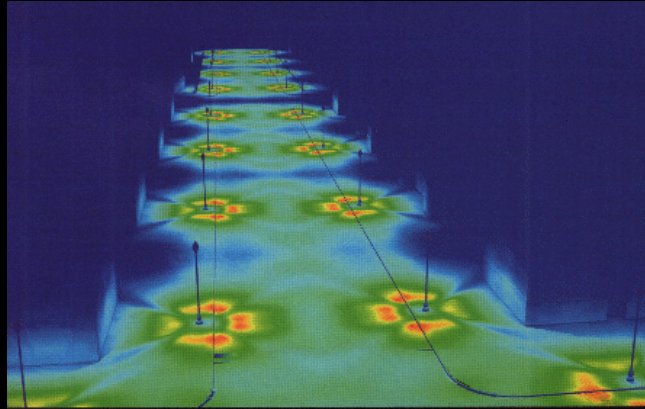
Lighting Control Strategies

- Install motion-sensitive lighting.
- Return to individual metering.
- Do away with exterior vanity lighting entirely. Substitute with strobe lighting.
- Where exterior lighting is required use shield lighting and limit to ground level.



Good vs. Bad Night Lighting

Shaded Light





At the flick of a switch we can help...





At the flick of a switch we can help...

- reduce CO₂ -emissions.
- save energy costs.
- provide a healthy & safe urban environment.
- see the night sky.
- preserve wildlife.

